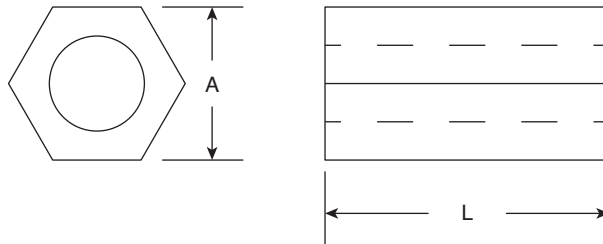


HEX NYLON TAPPED SPACERS

561-L4.25, 561-L4.375, 561-L4.50, 561-L4.75, 561-L41.0, 561-L6.25, 561-L6.375, 561-L6.50, 561-L6.75, 561-L61.0, 561-L8.25, 561-L8.375, 561-L8.50, 561-L8.75, 561-L81.0, 561-L4.875, 561-L6.875, 561-L8.875, 561-L4.625, 561-L6.625, 561-L8.625, 561-14HTSP023, 561-L61.5

Date Last Revised: 1/7/13

DIMENSIONS: in(mm.)



| MOUSER STOCK NO. | Description | L | A | Tapped |
|-----------------------|-------------|---------------|---------------|--------|
| 561-L4.25 | HTSP 1 | 0.250 (±.015) | 0.250 (±.015) | 4-40 |
| 561-L4.375 | HTSP 2 | 0.375 (±.015) | 0.250 (±.015) | 4-40 |
| 561-L4.50 | HTSP 3 | 0.500 (±.015) | 0.250 (±.015) | 4-40 |
| 561-L4.75 | HTSP 4 | 0.750 (±.015) | 0.250 (±.015) | 4-40 |
| 561-L41.0 | HTSP 5 | 1.000 (±.015) | 0.250 (±.015) | 4-40 |
| 561-L6.25 | HTSP 6 | 0.250 (±.015) | 0.250 (±.015) | 6-32 |
| 561-L6.375 | HTSP 7 | 0.375 (±.015) | 0.250 (±.015) | 6-32 |
| 561-L6.50 | HTSP 8 | 0.500 (±.015) | 0.250 (±.015) | 6-32 |
| 561-L6.75 | HTSP 9 | 0.750 (±.015) | 0.250 (±.015) | 6-32 |
| 561-L61.0 | HTSP 10 | 1.000 (±.015) | 0.250 (±.015) | 6-32 |
| 561-L8.25 | HTSP 11 | 0.250 (±.015) | 0.250 (±.015) | 8-32 |
| 561-L8.375 | HTSP 12 | 0.375 (±.015) | 0.250 (±.015) | 8-32 |
| 561-L8.50 | HTSP 13 | 0.500 (±.015) | 0.250 (±.015) | 8-32 |
| 561-L8.75 | HTSP 14 | 0.750 (±.015) | 0.250 (±.015) | 8-32 |
| 561-L81.0 | HTSP 15 | 1.000 (±.015) | 0.250 (±.015) | 8-32 |
| 561-L4.875 | HTSP 16 | 0.875 (±.015) | 0.250 (±.015) | 4-40 |
| 561-L6.875 | HTSP 17 | 0.875 (±.015) | 0.250 (±.015) | 6-32 |
| 561-L8.875 | HTSP 18 | 0.875 (±.015) | 0.250 (±.015) | 8-32 |
| 561-L4.625 | HTSP 19 | 0.625 (±.015) | 0.250 (±.015) | 4-40 |
| 561-L6.625 | HTSP 20 | 0.625 (±.015) | 0.250 (±.015) | 6-32 |
| 561-L8.625 | HTSP 21 | 0.625 (±.015) | 0.250 (±.015) | 8-32 |
| 561-14HTSP023 | HTSP 23 | 1.250 (±.015) | 0.250 (±.015) | 6-32 |
| 561-L61.5 | HTSP 36 | 1.500 (±.015) | 0.250 (±.015) | 6-32 |
| RoHS Compliant | | | | |